

Aspirational

Compassionate

Resilient

Resourceful

Respectful

The Transition Process

Making a smooth start...

Aspirational

Compassionate

Resilient

Resourceful

Respectful

THE AIM OF YEAR 7

- **To develop your son/daughter's independence and resilience**
- **Adapt to high school routines and their new environment – big focus on getting the small things right**
- **To prepare students for academic excellence**
- **To develop a sense of responsibility, resourcefulness and initiative**
- **Organisation- taking ownership**

Key Features of KS3

- **Pastoral Care**
- **Static Leader of Learning (Head of Year) in Year 7**
- **Broad curriculum for all - two year Key Stage 3 and a three year Key Stage 4**
- **Extra-curricular and enrichment opportunities (WOW)**

Aspirational

Compassionate

Resilient

Resourceful

Respectful

Attendance

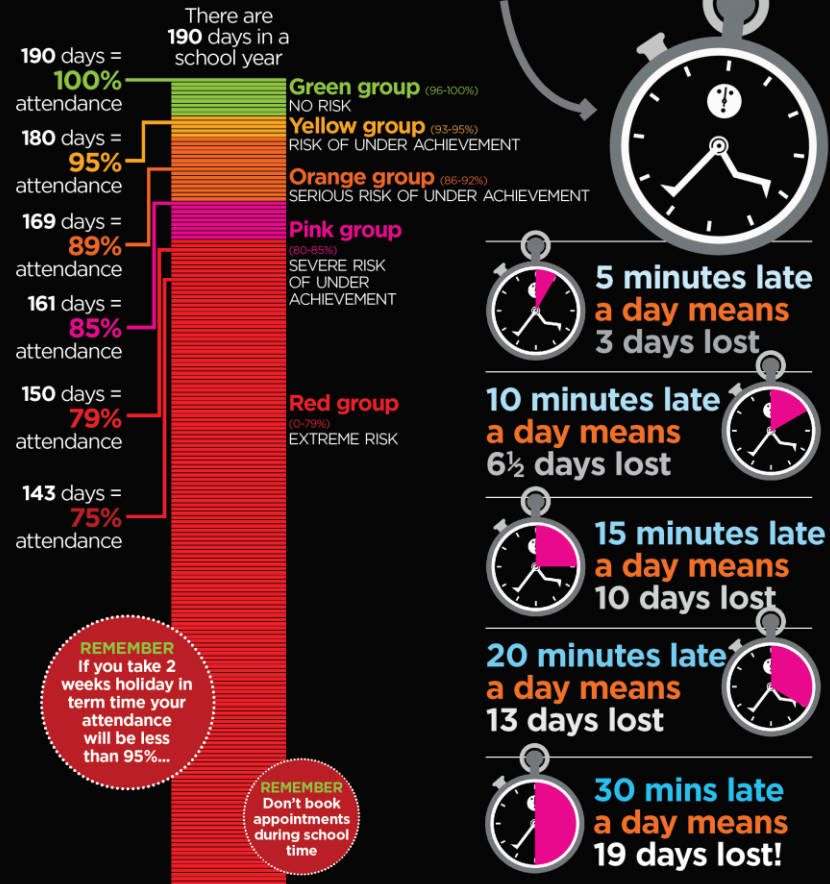


Attendance



ATTENDANCE

Every minute counts



MISSING SCHOOL MEANS MISSING OUT!

Homework

will be set separately by subjects and will take approximately 20-30 minutes to do per task.

It will consist of such things as:

Recall and Organise

- Learning key vocabulary
- Learning a topic through use of a knowledge organizer
- Producing a mind map or flash cards on a given topic

HOMework

IS SET AND MONITORED BY TEACHERS AND VIEWED AT HOME VIA *SATCHEL*- AN ONLINE PLATFORM

The screenshot displays the Satchel:one interface. On the left is a dark sidebar with the user profile 'Mrs Orrin' and a '+ Create task' button. Below are navigation links: Dashboard, My classes, Calendar, Timetable, and Detentions. The main area features a search bar and filters for class, teacher, and status. Below this is a table titled 'View the submission status and grades for your student's homework tasks'.

Due on	Homework	Subject	Status	Grade	
18/07/2022	Reading Project	Eng (8Y/En3)			Assess
18/07/2022	Reading Project	Eng (8Y/En3)			Assess
08/07/2022	Year 8 Super Curriculum	Ps (8Y/Ps3)			Assess
28/06/2022	Year 8 Key Drama Terms Spelling Test	Drama (8Y/Dr3)			Results
24/06/2022	End of unit assessment	Geography (8Y/Ge2)			Assess

Aspirational

Compassionate

Resilient

Resourceful

Respectful

Behaviour

Aspirational

Compassionate

Resilient

Resourceful

Respectful

Students at Copleston
always adopt the right
SLANT
on behaviour

Sit up straight
and pay
attention

Listen
carefully to
instructions

Ask or answer
questions at every
opportunity but...

Never interrupt
anyone when
they are talking

Track the teacher
when they are
talking to the class

Aspirational

Compassionate

Resilient

Resourceful

Respectful

Corridor Conduct



Don't use mobile phones or headphones

Do respect the space of fellow students



Don't shout or use inappropriate language

Do walk in single file on the left



Do put litter in the bin

Don't wear caps, hats or a hoody with the top up



Do wear the correct school uniform



Don't run, linger or push and shove others



Treat the places where you live and work with respect and expect it in return.

Safeguarding and safety at Copleston

- In addition to the DSL, every Leader of Learning and their deputy is fully safeguarding trained.
- They meet regularly and share information with each other and with any external professionals if necessary.
- They will always keep you in the loop and your child's safety at the very centre of every decision.

A Designated Safeguarding Lead ensures safeguarding is at the heart of the school ethos and that all staff are supported in knowing how to recognise and respond to potential concerns.



Mr Palmer

Designated Safeguarding
Lead/Prevent Lead

UNIFORM



Aspirational

Compassionate

Resilient

Resourceful

Respectful

COMMUNICATION WITH SCHOOL

- **School Website**
- **Form Tutor**
- **Year 7 Leader of Learning**
- **Email, telephone call, letters, Go4Schools, Satchel and ParentMail**
- **Appointments with the Pastoral Team**

REWARDS and ENRICHMENT OPPORTUNITIES FOR ALL IN YEAR 7

- Reward positive commitment to school
- Achievement assemblies and celebration evenings
- WOW – Wednesday activities
- Clubs – available during and after school (chess, lego, knitting, LGBTQ+)
- Tutor group and Year representatives
- Leadership responsibilities – student voice
- Head of Year helpers
- Copleston Core Values
- Trips and visits- pantomime, Spain, Ardeche, ski trip, theatre trips...

Aspirational

Compassionate

Resilient

Resourceful

Respectful

GCSE Examination Results

Achieving Success Together...

Aspirational

Compassionate

Resilient

Resourceful

Respectful

- Copleston students achieved 80 % 4-9 in English and Maths in 2022
- Copleston students achieved 57% 5-9 in English and Maths in 2022
- We had an overall Progress 8 score of +0.43 in 2022
- We have generated consistently strong outcomes at Key Stage 4 since 2017
- The scores in 2017, 2018, 2019 and 2022 were 0.52, 0.38, 0.36 and 0.43_ - *all significantly above average*
- Strong outcomes at Key Stage 5 with 32 %A* - A and 84% A*-C in 2022



Aspirational

Compassionate

Resilient

Resourceful

Respectful



4 SCHOOLS

Aspirational

Compassionate

Resilient

Resourceful

Respectful

- **“Live” information about your child’s attendance at school (updated over night every day)**
- **Up-to-date information about your child’s progress, and their assessment results, via the online mark book**
- **Information about your child’s behaviour in school – rewards and sanctions (and why they have been given)**



- **Ensure that you have provided us with your current email address.**
- **Use that address to log in to the Go4Schools website**
- **Request a temporary password**
- **Log in with the temporary password, then change it to something you can remember**
- **Start accessing the site!**



School Reports on Go4Schools

- You will be able to access your child's latest school report on line using Go4Schools
- Please note that we do not issue paper reports as a matter of routine but please contact us if you require a paper copy and we will be happy to send one



Reports

- **Via school website notification**
- **Via a letter which will be sent home**
- **Via a note on Go4Schools which will tell you when reports have been released**
- **A member of staff may contact you if you have not accessed your report**

Our Aims and Ethos

To enable all students to be successful, individual and happy in a supportive environment

Aspirational

Compassionate

Resilient

Resourceful

Respectful

Culture for Learning

- **Your school is truly inclusive, where pupils are given every opportunity to achieve their best.**
- **On entering the school, visitors are immediately struck by the calm and welcoming atmosphere.**
- **Pupils' behaviour was exemplary.**
- **Pupils look out for each other while also being polite, responsible and conscientious. They know you have their best interests at heart. They value the rich and highly personalised curriculum that helps them to reach their individual goals and achieve well.**

Aspirational

Compassionate

Resilient

Resourceful

Respectful

Teaching and Learning

- You pursue what is in the best interests of pupils and, in this, you have been very successful.
- Throughout the inspection, we saw teachers who plan lessons well, and pupils who work hard because they are given a variety of challenging activities that fire their imagination.
- Inspectors noted teachers' good use of their strong subject knowledge, and effective and open questioning to identify misconceptions and extend pupils' knowledge further.
- Where misconceptions arise, teachers skilfully adapt teaching to provide extra support to pupils who need more help.

Leadership – Ofsted Quotes

- **Leaders’ rigorous, accurate and detailed tracking of pupils’ performance helps inform any additional interventions. The well-targeted support that pupils receive helps them quickly to develop their literacy and numeracy skills and allows many more to make rapid and sustained progress. This enables pupils across all year groups to make very strong progress across a wide range of subjects.**
- **You and other leaders have a clear understanding of the school’s effectiveness. You can articulate strengths very clearly.**
- **You lead a cohesive team.**
- **Staff morale is high, because you value staff.**
- **Leaders’ detailed monitoring of teaching and learning has also helped to improve students’ progress.**

Aspirational

Compassionate

Resilient

Resourceful

Respectful

DATES FOR YOUR DIARIES

- **7th December 2023 – First report issued**
- **January 18th 2024 – Parents' Consultation Evening**
- **4th July 2024 – Second Report Issued**






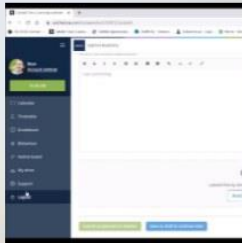
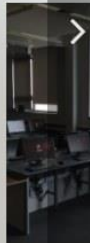
Professional Development Days for staff only

- Monday 4 September 2023
- Tuesday 5 September 2023 – Performance Management
- Wednesday 3 January 2024
- Friday 12 April 2024 - Disaggregated
- Friday 19 July 2024 - Disaggregated

WHAT'S AHEAD FOR YEAR 7...

- **Auditions for the school production**
- **Library Week and Book Mastermind (Nov)**
- **Year 6 and 7 Carol Service (Dec)**
- **Christmas Dance Show – Dance East**
- **Panto trip to the Wolsey Theatre**
- **Achievement assembly (Dec)**

Induction Area on Copleston High School website- live now

05	06	07	08	09	10	11
How will I find my...	What will I need t...	Are there lots of r...	What happens at ...	What is a typical s...	How does Home ...	INDUC
						

Aspirational

Compassionate

Resilient

Resourceful

Respectful